

BLOODO DRIED BLOOD SAMPLE COLLECTION KIT INSTRUCTION FOR USE



Bloodo dried blood spot (DBS) sample collection kit is a CE-registered in vitro diagnostic medical device for self-sampling of capillary blood. It is also suitable for professional use in both capillary and venipuncture* blood collection. The kit can be used for blood sample collection in medical institutions or at home. The DBS kit is intended for one-time collection of blood samples from one person. DBS kit includes a specimen card and all necessary components for easy blood collection and shipping to the laboratory. It is designed for sample collection only and does not provide direct results. Results are delivered following laboratory analysis. DBS kit is intended for adults (18+). For children, it should only be used under adult supervision. DBS sample collection is not recommended for individuals who have had a mastectomy, are dehydrated, or have poor circulation to the extremities. For patients with edema, avoid sampling from the edematous site. If you have these or other medical conditions requiring special precautions for capillary blood collection, please consult a physician. DBS sampling should never be performed on the fingers of newborns, infants under six months old, or those weighing less than 10 kg. Heel-prick collection for newborns must be performed by qualified professionals.

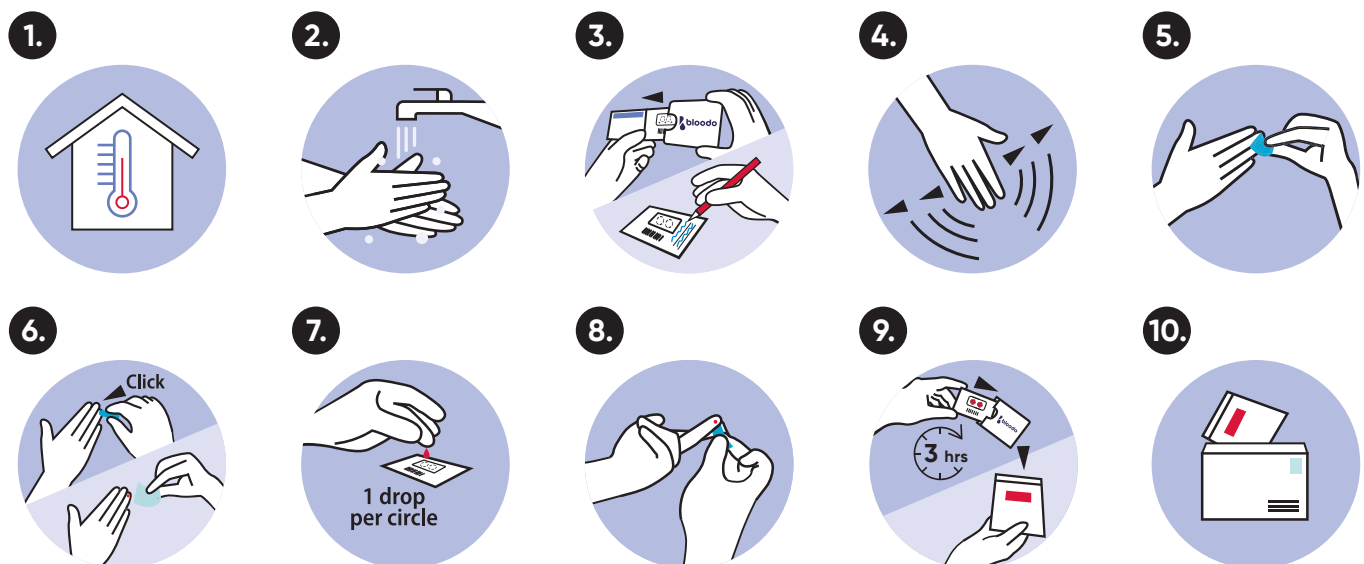
* Venipuncture sample collection should only be performed by trained personnel. EDTA tubes can be used (no heparin or citrate blood). Apply 60 µL using a micropipette into the middle of each sampling circle. Do not touch the pipette to the specimen area of DBS sample collection card.

DBS kit doesn't contain any medicines or substances that could cause adverse reactions, as well as any ingredients which might influence the measurement. The blood sample collection card included in the DBS kit is suitable for manual and automated laboratory analysis. DBS kit is not designed for a specific instrument and is compatible with most laboratory equipment used for the analysis of DBS samples.

Content:

1 alcohol wipe, 2 lancets, 1 band-aid, 1 gauze pad, 1 blood sample collection card, 1 card's sleeve, 1 foil bag, instruction manual and envelope for shipping the samples.

! Take your blood samples before breakfast



1. Wait for the kit to reach room temperature.

2. Wash hands with soap and warm water, dry them.

Stay hydrated before blood collection.

3. Remove the card from the card's sleeve. Tear off the "KEEP THIS" part and keep it.

Write the date of sampling, your age and sex on the card.

4. Stimulate blood flow by waving hand down for ~20 seconds.



See our video
instructions

5. Wipe the ring finger with an alcohol wipe and let it air dry.

6. Prick the tip of the ring finger with a lancet¹ and wipe the first drop of blood with a gauze pad.

Remove the safety cap from the lancet and press firmly on the side of the ring finger until you hear a click². Use the gauze pad to wipe away the first drop of blood.

¹ Do not use the lancet if its plastic container is damaged or broken. Lancets are for single use only.

² Used lancets can be safely disposed with general waste unless otherwise provided by local law.

7. Drip one large blood drop in each circle.

Lightly squeeze the finger above the specimen area to form a large hanging blood drop. Let the drop, but not the finger, contact the paper. Avoid excessive squeezing and contact with the specimen area.

Do not touch the specimen area of the card!

8. Apply the band-aid.

9. Insert the card into the sleeve without touching the specimen area. Let it air dry for 3 hours at room temperature. Once dry, place the sleeved card into a foil bag and seal it tightly.

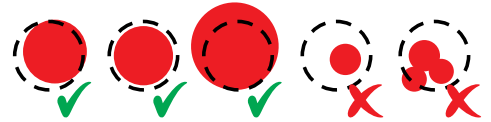
Additional heat sources must not be used to dry the sample. Do NOT remove the drying agent inside the foil bag!

10. Place the foil bag into the paper envelope³. Store below 25°C, avoiding direct sunlight. Post immediately or by the next day using national postal or courier services. Attach a postage stamp, if required.

³The sender's address should not be indicated on the outer envelope in order to preserve your confidentiality.

11. Check your results with your unique code on the "KEEP THIS" part at www.bloodo.com.

Check your blood spots



Legal Disclaimer:

The use of this product must be in complete accordance with the enclosed directions. Bloodo assumes no liability for damages caused by the product, or its components being used in any other way. The analysis of the dried blood spot samples is performed in the laboratory. Laboratory can provide information about the test type, principle, and other specifics in certain situations, if needed. The results and recommendations given after the blood samples have been analysed in laboratory, give an estimated level of risk, nutritional and lifestyle advice, but are not meant to replace direct contact, examination or treatment by a doctor or other health care professional. The analysis results and recommendations must be viewed in context of the time in which they were given.

Any serious incident that has occurred in relation to the device shall be reported to the manufacturer (info@bloodo.com) and the competent authority of the Member State in which the user and/or the patient are established.

 Consult instructions for use

 Do not use if the package is damaged

 Do not touch/hold by the edge

 Manufacturer

 Do not re-use

 Temperature limit


 Keep away from sunlight

 Keep dry

 Use-by date

 Batch code

 In vitro diagnostic medical device

 The device meets the general safety and performance requirements under the In Vitro Diagnostic Regulation 2017/746 (IVDR)

 Recyclable packaging